

MALDEN PUBLIC LIBRARY

FISCAL YEAR 2021



**ANNUAL REPORTS OF THE
TRUSTEES AND LIBRARIAN**

MALDEN, MASSACHUSETTS

**ONE HUNDRED AND FORTY SECOND
ANNUAL REPORT**

OF THE

MALDEN PUBLIC LIBRARY



MALDEN, MASSACHUSETTS

FOR THE

YEAR ENDING JUNE 30, 2021

**MALDEN PUBLIC LIBRARY
ORGANIZATION**

Trustees of the Malden Public Library, 2020

| | | |
|---|------|----------------|
| Dr. John Tramondozzi, <i>President</i> | 1980 | February, 2021 |
| =Joseph F. Lawless, <i>Vice President</i> | 1997 | February, 2022 |
| Anthony Spadafora | 2020 | February, 2022 |
| Frank M. Molis, <i>Treasurer</i> | 2004 | February, 2022 |
| Gregory Lucey, <i>Secretary</i> | 2014 | February, 2023 |
| Nancy L. McPheeters | 2019 | February, 2023 |
| Jayne E. Brown, <i>Auditor</i> | 2003 | February, 2021 |
| Anne D'Urso-Rose | 2009 | February, 2021 |
| Lisa A. Jacobson | 2009 | February, 2023 |
| Rev. Martha Dominy | 2014 | February, 2022 |

Ex-Officiis

Gary Christenson
(Mayor of the City)

Jadene Sica
(President of the City Council)

Honorary Trustee
Rita E. Hashem (1985-2010)

COMMITTEES

Library

| | | |
|------------------|--------------------|-------------------|
| Jayne E. Brown | Nancy McPheeters | Anthony Spadafora |
| Anne D'Urso-Rose | Rev. Martha Dominy | |

Finance

| | | |
|----------------|------------------|-------------------|
| Frank M. Molis | Lisa A. Jacobson | Anthony Spadafora |
| | Gregory Lucey | |

Art

| | | |
|-------------------------|----------------|-------------------|
| Dr. John E. Tramondozzi | Jayne E. Brown | Anthony Spadafora |
|-------------------------|----------------|-------------------|

Buildings and Grounds

| | | |
|--------------------|------------------|------------------|
| Gregory Lucey | Frank M. Molis | Lisa A. Jacobson |
| Rev. Martha Dominy | Nancy McPheeters | |

Lecture

| | | |
|---------------------|------------------|------------------|
| Anthony Spadafora | Jayne Brown | Anne D'Urso-Rose |
| Nancy L. McPheeters | Lisa A. Jacobson | |

NOTE: The President is ex-officio member on all Committees.

§Retired *Resigned %New Trustee =Deceased

**MALDEN PUBLIC LIBRARY
ORGANIZATION**

Trustees of the Malden Public Library, 2021

| | | |
|--|------|----------------|
| Dr. John Tramondozzi, <i>President</i> | 1980 | February, 2024 |
| Anthony Spadafora | 2020 | February, 2022 |
| Frank M. Molis, <i>Treasurer</i> | 2004 | February, 2022 |
| Gregory Lucey | 2014 | February, 2023 |
| Nancy L. McPheeters, <i>Secretary</i> | 2019 | February, 2023 |
| Jayne E. Brown, <i>Vice President</i> | 2003 | February, 2024 |
| Anne D'Urso-Rose | 2009 | February, 2024 |
| Lisa A. Jacobson | 2009 | February, 2023 |
| §Rev. Martha Dominy | 2014 | February, 2022 |
| %John Parcellin | 2021 | February, 2022 |

Ex-Officiis

Gary Christenson
(Mayor of the City)

Neal Anderson
(President of the City Council)

Honorary Trustees
Rita E. Hashem (1985-2010)

COMMITTEES

Library

Rev. Martha Dominy Nancy L. McPheeters Anthony Spadafora
Anne D'Urso-Rose Jayne Brown

Finance

Frank M. Molis Lisa A. Jacobson Jayne Brown
Gregory Lucey

Art

Dr. John E. Tramondozzi Jayne E. Brown Anthony Spadafora
Nancy McPheeters

Buildings and Grounds

Gregory Lucey Anthony Spadafora Frank M. Molis
Lisa A. Jacobson Rev. Martha Dominy

Lecture

Lisa Jacobson Jayne Brown Anne D'Urso-Rose
Nancy L. McPheeters Anthony Spadafora

NOTE: The President is ex-officio member on all Committees.

§Retired *Resigned %New Trustee =Deceased

**MALDEN PUBLIC LIBRARY
ORGANIZATION**

Staff of the Malden Public Library, 2021

| | |
|--------------------------|------------------|
| Director | Dora St. Martin |
| Assistant Director | Caron Guigli |
| Administrative Assistant | Judith A. Weaver |

Professional Librarians

| | | |
|-----------------|-----------------|-------------------|
| Lily Mysona | Stacy Holder | Wendy Kung |
| Jean Slavkovsky | Patrick Brennan | Jennifer Browning |
| Rebecca Smith | Tina Vegelante | |

Library Assistants

| | | |
|------------------------|-----------------|----------------|
| Monica Hatzis | Laura Buckley | Caitlin Quinn |
| Marjorie Glennon | Derek Diggs | Carol Woodruff |
| Heidi Kruckenberg-P.T. | GC, Yojana-P.T. | |

Building Custodians

Paul Higgins, Senior Custodian
Michael Rennie

MESSENGERS

STACKS/CHILDREN'S ROOM

Jennifer Wong

| | | |
|------------|---------------|-----------|
| §Retired | ∞New Employee | *Resigned |
| #Promotion | | =Deceased |

ANNUAL REPORT OF THE PRESIDENT OF THE BOARD OF TRUSTEES

This is the 143rd Annual Report of the Malden Public Library as mandated by a Special Act of the State Legislature and the 15th Annual Report of this President.

When the going gets tough the tough get going.

The past year has been extremely tough for the library, but no one could be tougher especially when hit by a pandemic, flood and more!

In spite of these unprecedented obstacles, library patrons, staff, administration and Trustees adopted new and creative measures to deal with them, especially during state mandated closure to the public. Curbside services and zooming became new and popular means of continuing of services and programs. Once COVID was under control, soft openings with everyone masked and sanitized started in - person service returned to the library.

During this time meetings and programs were “zoomed” (remotely), exhibits were cancelled or put on hold, but work went on “behind the scenes”. A new small gallery was fashioned from a storage area off the Carr Gallery. Three new small reading/meeting rooms were constructed from the underused part of the main reading room. These are dedicated in honor of past Trustees George Holland and Joseph Lawless.



Plans to restore the Olmstead Garden were undertaken; and grants were received to prepare the basement areas for library and Historical Society storage.

In February, a flood occurred in the main building top floor; it has since been remedied with only minor losses.

There was no Triple Threat Trivia, Wine tasting, or Book Sale; WIFI was improved.

The Art Collection grew by donations and purchases.

Anthony Spadafora was elected to the Board after the death of Joseph Lawless who had served since 1997. Trustee Martha Dominy informed the Board of her plan to return home to New York during the summer. When she leaves a new Trustee will be sought.



The Board and I wish to thank the Friends of the Library for their continued support.

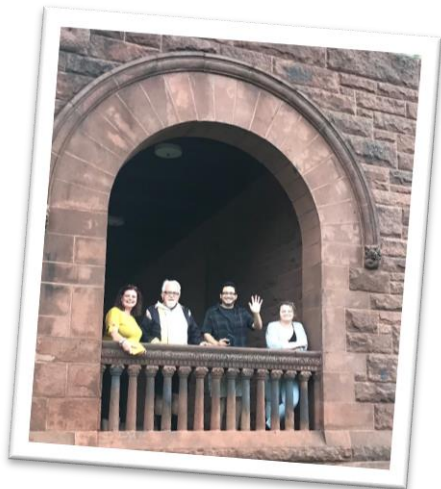
Moreover, we wish to thank all those agencies and individuals who have provided grants and monies to help the library continue its special service to its patrons, especially the Adelaide Breed Bayrd Foundation, John Preotle, John Giso, Michael Nuttall.

We wish to thank the Mayor, City Council and all other City officials who worked and continue to work with the Board in providing a modern up to date Library for all our patrons during the toughest of conditions.

Although COVID precautions are still in effect, the “tough” Library gets going!

Respectfully submitted,

John E. Tramondozzi
President
Board of Trustees



REPORT OF THE LIBRARIAN

This is the 9th report of the Librarian and the 143rd submitted to the Board of Trustees.

The past year was challenging for everyone. COVID-19 continued to impact our daily lives, changing the way we live, work and learn in so many ways. We will all look back at 2021 as a time of great strength and resilience when dealing with so much uncertainty.

Despite the continued pandemic, the Malden Public Library moved forward this past year. The Library is now fully reopened, browsing the shelves is back, and the library is filled again with library users, young and old.

Over the summer, in-person programming returned with a well-attended outdoor summer reading program and book sales held on the library lawn. Outdoor events included Story Walks and family movie nights, grab & go crafts for kids, and participation in the City of Malden's Summer Festival – to help bring business back to the downtown area.



The Converse Memorial Building re-opened with art gallery tour and local history hours. A small reception was held for the newly opened small works gallery funded by John Giso, Michael Nutall and John Preotle. The exhibit showcased works from the library's fine art print collection; and also highlighted newly acquired works by Malden born artist Gale Fulton Ross.

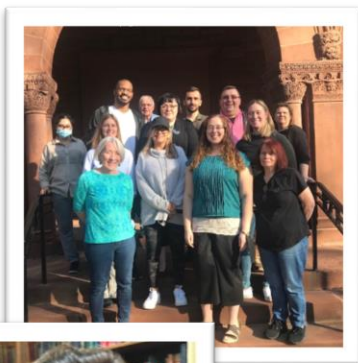


In April, Kyera Singleton, Executive Director of the Royall House & Slave Quarters in Medford presented “Telling Uncomfortable Histories: The Enduring Legacy of Slavery and Racism in the North.” The talk addressed the importance of talking about the history of slavery in the context of “northern history” as well as the legacy of slavery on society today. The grant was part of a long-term research project to uncover the lives of enslaved and free Blacks in Malden’s Founding Era led by Library Director Dora St. Martin. Participants were able to take a virtual tour of Royall House, which at the time was closed due to the pandemic. The lecture and video showing were funded by Gilder Lehrman Institute of American History and the National Endowment for the Humanities.



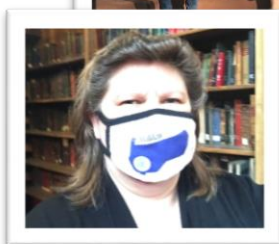
There will be many more challenges in the year to come, but thanks to our wonderful community of supporters, we look forward to this coming year with a renewed sense of purpose and optimism.

My continued thanks to the entire Malden Public Library staff, the Board of Trustees, Mayor Gary Christenson, and all city officials, our generous donors and volunteers, and to the wonderful community of Malden for their continued support.



Respectfully submitted,

Dora St. Martin
Director



REPORT OF THE ASSISTANT LIBRARIAN

This is the 8th report of the Assistant Librarian and the 142nd submitted to the Board of Trustees.

The fiscal 2022 year at the Malden Public Library has been unlike any other in most of our lifetimes. Each day brought situations and challenges that were unique and often required MacGyver-like solutions. But with a great staff who embraced the concept of being flexible and able to pivot when needed, and a wonderful community that continued to support us as we did our best to keep our materials circulating, the Library has emerged to continue our mission of supplying educational and entertaining materials for everyone.

Technology

Following up with our wiring upgrade for the public computers last year, this year we continued with improved and expanded wiring in all areas of the library, including staff areas and the Converse Memorial Building. This enabled us to have dedicated Ethernet drops for each computer.

In addition, we upgraded our WIFI capabilities with the installation of additional Meraki wifi extenders. This expanded our coverage into the old building and to the grounds around the library. Because we were doing curbside delivery for much of this fiscal year, this enabled many people to sit outside, day and night, to connect to our wifi – and later improved services for those returning inside the library.

In addition, in response to Boston Public Library telling us of their plan to upgrade our ILS system (Polaris), we purchased and began imaging and installing new Windows 10 computers for staff. Our Polaris upgrade requires Windows 10 computers, and although it has not been rolled out as yet, we plan to be ready when they do.



Friends of the Malden Public Library

The Friends continued to meet virtually during the year and although indoor book sales were not possible, they did hold “pop-up” book sales on the library front lawn during the summer in conjunction with the City’s Summer Festivals.

The Friends also continued their tradition of joining the Malden Chamber of Commerce in their Annual Halloween Trick-Or-Treating in the Square. The Friends, instead of distributing candy to the youth of Malden, give away books to the children. Again, another activity that is enjoyed equally by the children and the Friends volunteers.



Malden Reads

2020-21 was the 11th year of Malden Reads, and the title chosen was *Born a Crime* by Trevor Noah. Themes of the book include racism, domestic violence, white privilege, storytelling, and the power of words and writing to amplify and discuss these ideas. Programming included book discussions, films, podcasts, artwork, and workshops. Although because of Covid-19 restrictions, programming was held virtually, programs and workshops were well attended.

Respectfully submitted,

Caron Guigli
Assistant Director

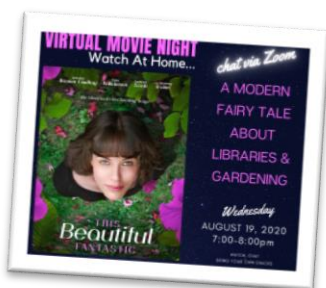


Library Goes Digital

While the library doors were closed, library staff were hard at work shifting from the physical work of the library to virtual work. New services were developed overnight, including book talks, virtual movie nights, and author talks via zoom. Library staff used social media to connect with patrons and also provide accurate and up to date information regarding the pandemic. They assisted residents in finding vaccine clinics and Covid testing sites – as well as providing educational and entertaining program to help everyone deal with the ongoing health crisis. The fact that this was accomplished while abiding by pandemic health protocols was a testament to the creativity and tenacity of the entire Library staff.

Residents increased their use of e-books, e-audiobooks and downloadable movies supported by the Library's access to Overdrive/Libby, Kanopy, Hoopla, and Tumblebooks for Kids. The Library added new online services including CreativeBug, Craftsyt, Black Freedom Struggle and Hyread, Taiwan's most popular library e-reading platform.

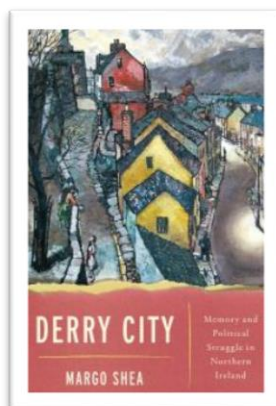
With assistance from the Boston Public Library's Digital Imaging Lab, the Library's collection of Malden High School's *Maldonian* Yearbooks were digitized and made available on the Internet Archive.



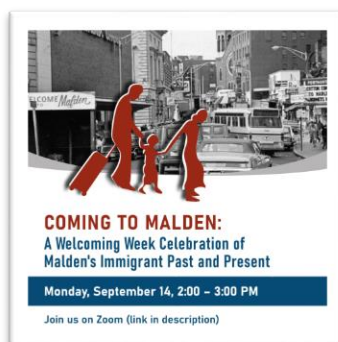
In July, the Library hosted a virtual film screening and community discussion of the award-winning film *Pushout*, based on the work of Dr. Monique W. Morris. The film examines the disproportionate discipline Black girls face beginning in preschool. Malden staff were joined by local leading educators including Jennifer Hedrington, Abdel Sepulveda, Alexandria Onuoha, Thora Henry, Eric Henry, Melanie Rush, and moderator Erga Pierrette. The showing was co-sponsored by the NAACP Mystic Valley Area Branch and the Network for Social Justice.



In September, the Library hosted a talk with Dr. Margo Shea, author of *Derry City: Memory and Political Struggle in Northern Ireland*. The virtual program explored the streets and neighborhoods that have become familiar to many through the very successful Netflix series, *Derry Girls*.



In September, the Library celebrated National Welcoming Week with a virtual panel discussion "Coming to Malden: Immigrants Past and Present." The event featured speakers John Tramondozzi, Mai Du of the Greater Malden Asian American Community Coalition, Diane Portnoy, founder of The Immigrant Learning Center, and hosted by ILC Education Director Denzil Mohammed and Library Director Dora St. Martin. At a time when political rhetoric deepened divisions, the event reminded us to continue to find ways to bring together people across lines of difference to develop greater understanding and mutual support.



Summer Reading Celebration

Readers of all ages explored the animal kingdom in this year's summer program, "Tails and Tales." Summer began with a grand kick-off outside on the lawn with free ice cream and visit with the new School Superintendent Ligia Noriega-Murphy and Mayor Gary Christenson.



Malden went above and beyond reading 568,523 minutes during the summer program. Whether 15 minutes, 15 hours, or 150 hours, residents made time to read and worked together to achieve something remarkable.

Summer events were sponsored by the Massachusetts Library System, the Boston Bruins & the Boston Pride hockey teams, and the Massachusetts Board of Library Commissioners; with local support from John Preotle, the Malden Cultural Council and the Friends of the Malden Public Library.



Youth Services Highlights

In addition to reading challenges and prizes, the summer was filled with activities for all ages from big book story times, outdoor story walks, grab & go crafts, a visit with Barn Babies, yoga on the lawn, sing-alongs and magic shows, in addition to board game nights, yoga and family movie nights at RiversEdge Park.



| SUMMER READING WEEKLY EVENTS | | | | |
|---|---|---|---|---|
| July 2021 | | Dates 26-30 | | |
| Monday 7/26 | Tuesday 7/27 | Wednesday 7/28 | Thursday 7/29 | Friday 7/30 |
| Children's Programs Sun Prints 2-3pm Library Lawn (ages 3-10) | Big Bubbles Party 10-10:45am Library Lawn | Balloon Rockets 2-3pm Library Lawn (Ages 5-10) | Tie-Dye Shirts Library Lawn Kids & YA 3-4:30pm (sign up required under 14) | Zoom Book Chat Online link on website 10-10:45pm (ages 7-10) |
| Teen Programs YA Book Review "Throne of Glass" 3-4pm Online | | | | YA Anime Afternoon Fairytale: Dragon City Canceled |
| Adult Programs | Poetry Share 7-8pm Portico Salem st. entrance | | | |
| Other Events | Don't forget to submit your reading minutes for the "Malden Half Million Summer Reading Challenge" @beanstack.com | | | Campfire Stories 6:30pm Online FB and Youtube |

Young Adult / Teen Services

Once the library re-opened, virtual and outdoor programs were offered for teens including book clubs, movie afternoons and yoga via zoom; and grab & go crafts were offered.



In September, the Library was notified it had been awarded a competitive NASA@ My Library. Malden was honored to be one of just 60 libraries nationwide to be chosen for the project.



Fairy House Festival at Pine Banks

Malden's 6th Annual Fairy House Festival was held on August 28th at Pine Banks Park. The whimsical event was organized by Ward 5 Councillor Barbara Murphy in conjunction with the Adelaide Breed Bayrd Foundation, Pine Banks Park and the Malden Public Library. The Library gave away books by award winning Fairy House Series writer and illustrator Tracey Kane donated by New Vision Pioneers.



SATURDAY LIBRARY EVENTS

Library Reopening News - Welcome Back

The Malden Public Library is very, very happy to announce that we have reopened for limited in-person browsing and holds pick up by appointment. Library in-person hours will be: Monday, Wednesday, Friday and Saturday 11-1 PM and Wednesdays 4-8 PM. Call 781-324-0218 to learn more or book your 20-minute appointment. Masks must be worn in [...]

READ MORE



TODAY AT THE LIBRARY

open

Library HotSpot

CHECK OUT THE INTERNET!

APP行動閱讀

親愛的，我把圖書館裝進口袋了！



**MALDEN PUBLIC LIBRARY
HOLDINGS INFORMATION
AS OF JUNE 30, 2021**

| Material Type | Adult & Young Adult | Children's | Total |
|---|------------------------------------|-------------------|----------------|
| Books | 159,838 | 42,502 | 202,340 |
| Print periodicals (Newspapers) | 11,876 | 977 | 12,853 |
| Audio (compact discs) | 2,035 | 373 | 2,408 |
| Video (DVD's) | 7,495 | 1,450 | 8,945 |
| E-books | 1,099 | 1,117 | 8,654 |
| Downloadable (audiobooks, music, etc.) | 1,213 | 473 | 2,216 |
| Downloadable video | 121 | 492 | 613 |
| Materials in electronic format (including CD-ROMS) | 184 | 21 | 205 |
| Microforms (fiche, rolls, etc.) | 10,952 | 0 | 10,952 |
| Miscellaneous (kits, framed art prints, puppets, films, etc.) | 0 | 0 | 0 |
| TOTAL | 194,873 | 47,405 | 242,278 |

**MALDEN PUBLIC LIBRARY
CIRCULATION STATISTICS
AS OF JUNE 30, 2021**

| Material Type | Adult & Young Adult | Children's | Total |
|---|------------------------------------|-------------------|----------------|
| Books | 48,839 | 61,108 | 109,947 |
| Print Periodicals | 761 | 33 | 794 |
| Audio (CD) | 430 | 372 | 802 |
| Video (VHS/DVDs) | 9,273 | 2,008 | 11,281 |
| E- books | 51,257 | 1,117 | 52,374 |
| Downloads Audio | 7,305 | 357 | 7,662 |
| Downloadable video | 2,117 | 207 | 2,324 |
| Materials in electronic format | 0 | 0 | 0 |
| Materials in microform | 0 | 0 | 0 |
| Misc. (e.g. e-books readers, kits, framed art, prints, puppets, films, etc.) | 28 | 17 | 45 |
| TOTAL | 120,010 | 65,219 | 185,229 |

SPECIAL AND MEMORIAL FUNDS

\$50.00 was added to the **LEO BLACHER FUND** by:

Alan Koblin

\$475.00 was added to the **EDWARD E. BROWN FUND** by:

Celia Brown

Carol Gendel

Carrie & Eric Meikle

Constance Martin

Nann Blaine Hilyard

\$100.00 was added to the **NANA & MANNY GOLDBERG
FUND** by:

Manuel L. Goldberg

\$3,200.00 was added to the **JAMES AND FLORENCE HASHEM
FUND** by:

Rita E. Hashem

\$500.00 was added to the **DINA D'ALTO MALGERI FUND** by:

Dina Malgeri

\$100.00 was added to the **NATHAN & ELSIE MASS FUND** by:

Alan Mass

\$50.00 was added to the **JOHN & GERTRUDE MCCAUL FUND** by:

Gertrude Sadeghpour

\$100.00 was added to the **DANIEL & JAMES O'BRIEN FUND** by:

Elizabeth J. O'Brien

\$850.00 was added to the **MORRIS & LAURA PIZER FUND** by:

Max L. Pizer

Robert and Sarah Adler

\$165.00 was added to the **HARRY & EDYTHE REINHERZ
ART & MUSIC FUND** by:

Linda Dunn

\$250.00 was added to the **JOHN AND GRACE TODISCO FUND** by:

Patrice Todisco

GIFTS AND BEQUESTS

ANONYMOUS DONORS

\$37,991.22 in 1977; income for Robinson Lectures, Music and Audio Visual

CONSTANTINE ARVANITES FUND

\$750 in 1999; income for purchase of books on art

PEARL BATES FUND

\$200 in 1994; income for purchase of books

ADELAIDE BREED BAYRD FUND

\$5,000 in 2012: income for purchase of books on travel, history and biography

FRANK A. & BLANCHE S. BAYRD FUND

\$5,000 in 2012: income for purchase of books on travel, history and biography

LUCIA ALLEN MILLET BAXTER FUND

\$362 in 1917; income for works of American poets

MAUDE ELIZABETH HENNEBERRY BERRY FUND

\$10,407.02 in 1985-1986: income for general purposes

LEO BLACHER MEMORIAL FUND

\$8,201 in 1982-2021; income for purchase of books

J. RUSSELL BOWMAN MEMORIAL FUND

\$1,810 in 1983-2014; income for purchase of books

BRENNAN FAMILY FUND

\$30,460 in 1998-2010; income for children's books

EDWARD E. BROWN FUND

\$7,743 in 1982-2021; income to be used to beautify the garden

RICHARD BUCKLEY FUND

\$1,330 in 2002; income for purchase of books

EUGENE M. & GEORGINA F. BURNETT FUND

\$1,570 in 1994-2001; income to be used for the purchase of books

JOHN CIAVARRO FUND

\$1,275 in 2012; income to be used for books on Scouting

ARTHUR D. COREY FUND

\$15,000 in 1928; income for purchase of books

DELORAIN P. COREY FUND

\$15,000 in 1928; income for purchase of books

MURIEL DINNEEN COSGROVE FUND

\$8,000 in 1979-2012; income for books on Roman, Gaelic or American History

MARY HAZEL CRYAN FUND

\$745 in 2001-2005; income for purchase of books

JEAN DICKIE MEMORIAL FUND

\$10,759 in 2002-2004; income for purchase of books

JENNIE O. ELLEFSEN FUND

\$400 in 1974; income to be used for general purposes

HERBERT W. FISON FUND

\$1,000 in 1957; income for purchase of books

ELAINE FOLEY FUND

\$990 in 1999; income for purchase of large print books

DONALD AND MAUREEN FORD FAMILY FUND

\$220 in 2002-2003; income to be used for general purposes

THE FIRST NATIONAL BANK OF MALDEN

\$1,250 in 1958; income for the purchase of books

SYDNEY AND MARY REINHERZ FREEDMAN FUND

\$10,859.81 in 1979-1998; income for purchase of large print books

FREDA GERRISH MEMORIAL FUND

\$1,290 in 1989; income to be used for general purposes

H. ELLIOT GERRISH FUND

\$2,788 in 1985-1996; income to be used for general purposes

LENA A.M.H. GESANG FUND

\$390 in 1962-1994; income for purchase of books

PERCY GLASER FUND

\$550 in 2001; income for purchase of books

NANA AND MANNY GOLDBERG FUND

\$9,029 in 1998-2021; income for purchase of books

DOROTHEA GRIFFIN FUND

\$880 in 1991-1992; income for purchase of books

WALTON S. HLL FUND

\$1,500 in 1972; income to be used for general purposes

JAMES AND FLORENCE HASHEM FUND

\$10,025 in 1987-2021; income to be used for general purposes

HORRACE HITCHINGS

\$3,000 in 1917; income used for the purchase of Religious books

JACOB HOLM FUND

\$5,000 in 1884; income for purchase of books

GRACE M. HOWES FUND

\$1,000 in 1969; income for purchase of general books

ELSIE G. HURLEY FUND

\$3,385 in 1971; income for purchase of books

RICHARD J. HYMAN FUND

\$5,000 in 2001; income for purchase of books

CHARLOTTE H. IRWIN FUND

\$5,025 in 1978-1995; income for the benefit of staff

ALFRED H. AND JEANNE JONES FUND

\$500 in 1980; income for programs for blind and visual handicapped; \$500 in 1980; income for purchase of books

DR. THOMAS KENNEY MEMORIAL FUND

\$300 in 1980; income for purchase of travel books

RITA KIERSTEAD FUND

\$385 in 1980; income for purchase of books

ABRAHAM KLAIMAN BOOK FUND

\$953 in 1991-1996; income for purchase of books

ISABEL H. LANG FUND

\$3,000 in 1983; income for purchase of books

SHIRELY D. LAPPIN FUND

\$3,516 in 2002-2015; income for purchase of books on history

ELMER G. LEWIS FINE ARTS FUND

\$5,000 in 1983; income for purchase of books of Fine Arts and paintings

ELMORE ESTES LOCKE FUND

\$1,000 in 1931; income for purchase of books

ELIZABETH H. LORD FUND

\$500 in 1882; income for purchase of books

EMMA P. LORD

\$5,000 in 1996; income to be used for general purposes

MARGARET LOPEZ AND LUCINDA MULLEN FUND

\$250 in 1965; income for purchase of books

MALDEN HIGH SCHOOL CLASS OF 1939

\$500 in 1989; income to be used for Children's Room

MALDEN POST #69 AMERICAN LEGION AND AUXILLARY

\$205 in 1999; income for purchase of books

DINA D'ALTO MALGERI FUND

\$18,285 in 1990-2021; income for purchase of books

SIMON MALKIN FUND

\$3,934 in 1985-2020; income for purchase of books

ELSIE AND NATHAN MASS MEMORIAL FUND

\$8,467 in 1985-2021; income for purchase of books

JOHN F. AND GERTRUDE V. MCCAUL FUND

\$2,140 in 1979-2021; income for purchase of books

DOROTHY M. MCFARLAND

\$525 in 1995-2003; income to be used for general purposes

MCKINLEY FAMILY FUND

\$33,350 in 1989-1995; income for purchase of books

AMELIA MICLETTE MEMORIAL FUND

\$856 in 1983; income for purchase of books

ANDREW NILSSON FUND

\$8,000 in 1957-1976; income for purchase of books

JOSEPH NILSSON FUND

\$10,000 in 1957-1976; income for purchase of books

REGINA NILSSON FUND

\$8,000 in 1957-1976; income for purchase of books

DANIEL AND JAMES O'BRIEN MEMORIAL FUND

\$2,275 in 1993-2021; income for purchase of books

MARGARET K. PARK FUND

\$2,000 in 1993-1953; income for purchase of books

MARY A. PERKINS FUND

\$49,062 in 1989; income to be used for general purposes

MARIE PERRY FUND

\$2,000 in 1974; income for general purposes

\$2,000 in 1974; income for lectures

MORRIS AND LAURA PIZER MEMORIAL FUND

\$24,450 in 1969-2021; income for purchase of books

SYDNEY PRICE FUND

\$400 in 1979-1984; income for purchase of books

HARRY AND EDYTHE REINHERZ MUSIC AND ART FUND

\$33,352 in 1985-2021; income for purchase of art and music

MARY RICCARDI FUND

\$745 in 2005; income for purchase of books

NANCY ROHWEDDER FUND

\$1,285 in 2012; income for purchase of books

RUTH ROSS MEMORIAL FUND

\$3,000 in 2003; income for Reference Department

\$2,000 in 2003; income for Children's Department

GEORGE D. ROSSYN FUND

\$3,110 in 1976-2005; income for purchase of books

JOSEPH AND FAY B. RUSSO ART FUND

\$26,325 in 1988; income to be used for art

GODFREY RYDER FUND

\$8,207 in 1939-1940; income for purchase of books

LILLIAN SANDLER FUND

\$1,985 in 2000-2002; income for purchase of books

FREIDA KLAIMAN SCHWARTZ FUND

\$1,100 in 1996-1998; income for purchase of books

LOUIS SHAMES MEMORIAL FUND

\$1,541 in 1983-2001; income for purchase of books

FRANCIS AUGUSTUS SHOVE FUND

\$1,000 in 1935; income for purchase of books

MILTON AND BERTHA SMITH MEMORIAL FUND

\$4,993 in 1987-2020; income for purchase of books

MARY E. WEBSTER SMITH FUND

\$1,000 in 1910; income for purchase of books

SANDRA LEE SMYLY FUND

\$10,000 in 1985; income for purchase of books

SYFFERMAN MEMORIAL FUND

\$8,000 in 1903; income for purchase of books

JEROME AND MAZIE THOMPSON FUND

\$1,400 in 1987-2012; income for purchase of books

JOHN AND GRACE TODISCO FUND

\$4,991 in 2001-2021; income for purchase of books

EDNA E. TURKINGTON FUND

\$26,779 in 1989-1992; income for purchase of books

FRANK P. WAKEFIELD FUND

\$1,008 in 1954; income for purchase of scientific books

JACOB WERLIN FUND

\$2,500 in 2004; income for purchase of books

EDNA MAY WHITTEMORE FUND

\$1,000 in 1971; income for purchase of books

PARKER WILLIAMS FUND

\$2,500 in 2000; income to be used for general purposes

VIRGINIA WILSON FUND

\$325 in 1998; income for purchase of books

ANNA YAGHJIAN FUND

\$203,963 in 2007; income to be used for Kindergarteners

Fund Balances as of June 30, 2021

| Name | Principal | Purpose | Income |
|--|-----------------|---------|-------------|
| Board Restricted Trust | \$ 1,333,894.72 | General | |
| Harry P. Ballard | \$ 1,000.00 | General | |
| Elisha & Mary Converse | \$ 250,000.00 | General | \$13,344.36 |
| M. Ida Converse | \$ 10,000.00 | General | |
| Isabelle H. Corey | \$ 99,511.26 | General | |
| James F. Eaton | \$ 5,000.00 | General | |
| Jennie O. Ellefsen | \$ 400.00 | General | |
| Donald & Maureen Ford | \$ 220.00 | General | |
| Freda Gerrish | \$ 1,290.00 | General | |
| H. Elliot Gerrish | \$ 2,788.00 | General | |
| Walton Hall | \$ 1,500.00 | General | |
| James & Florence Hashem | \$ 10,025.00 | General | |
| Grace Howe | \$ 1,000.00 | General | 58.27 |
| Morris Kahn | \$ 2,000.00 | General | |
| Emma P. Lord | \$ 5,000.00 | General | |
| Dorothy M. McFarland | \$ 525.00 | General | |
| Mary A. Perkins | \$ 49,061.66 | General | |
| Marie Perry | \$ 4,000.00 | General | |
| Parker Williams | \$ 2,500.00 | General | |
| Board Restricted Fund | \$ 323,956.04 | Art | |
| Elisha & Mary Converse | \$ 50,000.00 | Art | |
| Mary D. Converse | \$ 15,000.00 | Art | |
| Joseph & Fay Russo | \$ 26,325.00 | Art | |
| Anonymous | \$ 37,991.00 | Lecture | 2,213.74 |
| Ena Metcalf | \$ 30,000.00 | Lecture | 1,748.09 |
| Marie A. Perry | \$ 4,000.00 | Lecture | 116.54 |
| Roswell R. Robinson | \$ 13,600.00 | Lecture | 792.47 |
| Maude E. Henneberry Berry | \$ 10,407.02 | Special | 419.60 |
| Edward E. Brown | \$ 7,743.00 | Special | 375.80 |
| Charlotte Irwin | \$ 5,025.00 | Special | 292.81 |
| Malden High School Class of 1939 | \$ 500.00 | Special | 29.13 |
| Harry & Edythe Reinherz Music and Art Fund | \$ 33,352.00 | Special | 1,786.03 |
| Anna Yaghjian Fund | \$ 203,963.49 | Special | 3,668.59 |

| | | | | |
|---|----|-----------|-------|----------|
| Malden Post #69 American Legion & Auxiliary | \$ | 205.00 | Books | 11.95 |
| The First National Bank | \$ | 1,250.00 | Books | 72.84 |
| Constantine Arvanites | \$ | 750.00 | Books | 43.70 |
| Pearl Bates | \$ | 200.00 | Books | 11.65 |
| Adelaide Breed Bayrd | \$ | 5,000.00 | Books | 82.67 |
| Frank A. & Blanche S. Bayrd | \$ | 5,000.00 | Books | 82.67 |
| Lucia A. M. Baxter | \$ | 362.00 | Books | 21.09 |
| Leo Blacher | \$ | 8,201.00 | Books | 386.43 |
| J. Russell Bowman | \$ | 1,810.00 | Books | 99.64 |
| Brennan Family | \$ | 30,460.00 | Books | 1,655.44 |
| Richard Buckley | \$ | 1,330.00 | Books | 77.50 |
| Eugene M. & Georgina F. Burnett | \$ | 1,570.00 | Books | 91.48 |
| John Ciavarro | \$ | 1,275.00 | Books | 45.16 |
| Arthur D. Corey | \$ | 15,000.00 | Books | 874.05 |
| Deloraine P. Corey | \$ | 15,000.00 | Books | 874.05 |
| Muriel D. Cosgrove | \$ | 8,000.00 | Books | 419.54 |
| Hazel Cryan | \$ | 745.00 | Books | 43.41 |
| Jean Dickie Fund | \$ | 10,759.00 | Books | 626.92 |
| Herbert W. Fison | \$ | 1,000.00 | Books | 58.27 |
| Elaine Foley | \$ | 990.00 | Books | 57.69 |
| Sydney & Mary Freedman | \$ | 10,859.81 | Books | 632.80 |
| Lena A. M. Gesang | \$ | 390.00 | Books | 22.73 |
| Percy Glaser | \$ | 550.00 | Books | 32.05 |
| Nana & Manny Goldberg | \$ | 9,029.00 | Books | 502.81 |
| Dorothea Griffin | \$ | 800.00 | Books | 46.62 |
| Horace Hitchings | \$ | 3,000.00 | Books | 174.81 |
| Jacob Holm | \$ | 5,000.00 | Books | 291.35 |
| Elsie G. Hurley | \$ | 3,385.00 | Books | 197.24 |
| Richard Hyman | \$ | 5,080.00 | Books | 296.01 |
| Alfred & Jeanne Jones | \$ | 1,000.00 | Books | 58.27 |
| Thomas Kenney | \$ | 300.00 | Books | 17.48 |
| Rita Kierstead | \$ | 385.00 | Books | 22.43 |
| Abraham Klaiman | \$ | 953.46 | Books | 55.56 |
| Isabel H. Lang | \$ | 3,000.00 | Books | 174.81 |
| Shirley D. Lappin | \$ | 3,516.00 | Books | 122.37 |
| Elmer G. Lewis | \$ | 5,000.00 | Books | 291.35 |
| Elmore E. Locke | \$ | 1,000.00 | Books | 58.27 |
| M. Lopez & L. Mullen | \$ | 250.00 | Books | 14.57 |
| Elizabeth Lord | \$ | 500.00 | Books | 29.13 |

| | | | | |
|-------------------------|----|-----------|-------|----------|
| Dina D'Alto Malgeri | \$ | 18,285.00 | Books | 618.24 |
| Simon Malkin | \$ | 3,934.00 | Books | 192.81 |
| Elsie & Nathan Mass | \$ | 8,467.00 | Books | 352.24 |
| John & Gertrude McCaul | \$ | 2,140.00 | Books | 108.67 |
| McKinley Family Trust | \$ | 33,350.00 | Books | 1,943.30 |
| Amelia Miclette | \$ | 856.00 | Books | 49.88 |
| Andrew Nilsson | \$ | 8,000.00 | Books | 466.16 |
| Joseph Nilsson | \$ | 10,000.00 | Books | 582.70 |
| Regina Nilsson | \$ | 8,000.00 | Books | 466.16 |
| Daniel & James O'Brien | \$ | 2,275.00 | Books | 132.56 |
| Margaret Park | \$ | 2,000.00 | Books | 116.54 |
| Morris & Laura Pizer | \$ | 24,450.00 | Books | 870.49 |
| Sidney M. Price | \$ | 400.00 | Books | 23.31 |
| Mary Riccardi | \$ | 745.00 | Books | |
| Nancy Rohwedder | \$ | 1,285.00 | Books | 45.74 |
| Ruth Ross | \$ | 5,000.00 | Books | 291.35 |
| George Rossyn | \$ | 3,109.75 | Books | 181.20 |
| Godfrey Ryder | \$ | 8,207.00 | Books | 478.22 |
| Lillian Sandler | \$ | 1,985.00 | Books | 115.67 |
| Freida Klaiman Schwartz | \$ | 1,100.00 | Books | 64.10 |
| Louis Shames | \$ | 1,541.00 | Books | 82.25 |
| Francis Shove | \$ | 1,000.00 | Books | 89.79 |
| Bertha & Milton Smith | \$ | 4,993.00 | Books | 197.13 |
| Mary E. Webster Smith | \$ | 1,000.00 | Books | 58.27 |
| Sandra Lee Smyly | \$ | 10,000.00 | Books | 582.70 |
| Syfferman Memorial | \$ | 8,000.00 | Books | 466.16 |
| Jerome & Mazie Thompson | \$ | 1,400.00 | Books | 42.54 |
| John & Grace Todisco | \$ | 4,991.00 | Books | 156.80 |
| Edna Turkington | \$ | 26,779.37 | Books | 1,560.43 |
| Frank P. Wakefield | \$ | 1,008.00 | Books | 58.74 |
| Jacob Werlin | \$ | 2,500.00 | Books | 145.67 |
| Edna M. Whitmore | \$ | 1,000.00 | Books | 58.27 |
| Virginia Wilson | \$ | 325.00 | Books | 18.94 |

ART GALLERY

The following paintings were purchased with endowed art funds:

| Acquired | Subject | Artist |
|----------|--------------------------------|-------------------------|
| 1892 | Cape Ann Pasture | Albion H. Bicknell |
| 1897 | Shepherd Girl | Daniel J. Strain |
| 1900 | Roman Forum | George L. Brown |
| 1902 | Wood Interior | Thomas Hill |
| 1910 | Dutch Interior | Evert Pieters |
| 1910 | * The Kaiser-Gracht, Dordrecht | Francis Smith Hopkinton |
| 1912 | Fleeing Shadows | Paul Dougherty |
| 1912 | General Picton | William Beechey (Att'd) |
| 1913 | Fast Melting Snow | George G. Symons |
| 1913 | Armourer | Nicholas Maes |
| 1915 | * Crossing The Meadow | Dodge MacKnight |
| 1916 | * Colorado River | Dodge MacKnight |
| 1916 | * The Shelf | Dodge MacKnight |
| 1916 | Early Morning | William Keith |
| 1917 | L'Allegro | Charles H. Davis |
| 1918 | Boy with Dogs | Anthonie Palamedesz |
| 1918 | Femme Peintre | Albert Andre |
| 1919 | * Black Cap Chickadee | Charles E. Heil |
| 1919 | * Prairie Warbler | Charles E. Heil |
| 1921 | In The Garden of Versailles | Hubert Robert |
| 1922 | San Giorgio Maggiore, Venice | Francesco Guardi |
| 1923 | * Nantucket | Harold H. Brown |
| 1923 | + Going To Market | Florence B. Brown |
| 1923 | By The Sea | Florence B. Brown |
| 1925 | + Bacchante | Peter Prud'hon |
| 1925 | Yosemite Valley | Thomas E. Hill |
| 1925 | Reflections | Stanley W. Woodward |
| 1929 | Sweepstakes | Montague Dawson |
| 1938 | Near Dorking, Sussex | F.W. Watts |
| 1940 | The Reader | Juana Romani |
| 1940 | Louis XIV and Moliere | Jean Leon Gerome |
| 1940 | Garde Chasse | Constant Troyon |
| 1942 | In The Berkshires | George Inness |

| | | | |
|------|-----|--|-------------------------|
| 1943 | | Fishermen Going Out | George Morlan |
| 1944 | | Bachi-Bouzouks Jouant aux Echecs | Charles Bague |
| 1945 | | Winter-Connecticut River Valley | Paul Sample |
| 1947 | | The Barley Harvest | John Linnell |
| 1947 | | The Great Oak | Frederick Watts (Att'd) |
| 1952 | | Peasants Merrymaking | Giles Tilborch |
| 1966 | | Storm over Lanesville | Stanley W. Woodward |
| 1968 | | In the Lee of the Iceberg | William Bradford |
| 1979 | | Flatiron Building | Martin Lewis |
| 1980 | * | Gray Cross Cove | Rod Peterson |
| 1980 | * | Jackson Farmhouse | Rod Peterson |
| 1980 | * | World's End, Hingham | Rod Peterson |
| 1981 | | Big Blue | Constantine Arvanites |
| 1981 | | Portrait of a Young Girl | Horace Robbins Burdick |
| 1981 | | Factory District | Yvonne Twining Humber |
| 1982 | ## | American Provincial | Ben Black |
| 1982 | ## | Three Courtesans of Kyoto | Ben Black |
| 1983 | ** | Breezin' Up | Sam Cherone |
| 1983 | # | The Letter | Mary Dewey |
| 1986 | | French Fields | Charles H. Davis |
| 1990 | | Jergin's Trust | Carol Pylant |
| 1991 | * | Eastern Point Lighthouse | Constance Stella |
| 1992 | * | Fellsmere Pond | Harry Lerman |
| 1992 | | Abstract Seascape | Michael Schreck |
| 1992 | | Figures at the Beach, Rockport | Wayne Morrell |
| 1992 | | Back Street Venice | Gina Salviati |
| 1992 | | Newspapers with Apples & Grapes | Diciancio |
| 1992 | | Crane and Thought | Ji Cheng |
| 1992 | ++ | The Dream | Robyn Katz Adelman |
| 1996 | | Flowering Trees | Giovanni Castano |
| 1996 | | Floral Still-Life | Giovanni Castano |
| 1996 | * | Waterfall | Giovanni Castano |
| 1997 | ++ | Dusk Comes to Marlborough | Jack Drummey |
| 1999 | ### | Waveform | Toby Liederman |
| 1999 | * | Salem Street Group | Rod Peterson |
| 2000 | | Gregory on the Subway | Cameron Bennett |
| 2000 | = | 12 Part Painting Cycles and Continuities | Elsa Waller |

| | | | |
|------|-----|------------------------------|------------------------|
| 2000 | * | Potbelly Stove | Sam Slater |
| 2001 | | Interior Woodland | Bernard Corey |
| 2001 | * | Dorchester Heights | Brother Edward G. Rice |
| 2006 | * | Hightide | Juanita Guccione |
| 2006 | | Sorrow of an Old Star | I. Rice Pereira |
| 2006 | | Twins-Black Constellation | I. Rice Pereira |
| 2006 | | Starscrim | I. Rice Pereira |
| 2009 | | A Lady and Her Companion | Ernest L. Ipsen |
| 2009 | | Mrs. Marie Feigenspan | Ernest L. Ipsen |
| 2009 | | Mr. Lanthe and Bottles | Ernest L. Ipsen |
| 2013 | | Shadow, Light, Melody | Cameron Bennett |
| 2013 | | San Giorgio Maggiore, Venice | Giovanni Castano |
| 2013 | | After the Hunt | Darius Cobb |
| 2013 | | Portrait of Mary Ann Gleason | Darius Cobb |
| 2014 | | Coastal View with Driftwood | Ernest L. Ipsen |
| 2014 | *** | Carousel | Perle Fine |
| 2014 | *** | Untitled | Perle Fine |
| 2015 | | Swain's Pond | Joseph Morviller |
| 2015 | | Still Life with Two Ducks | Ernest L. Ipsen |
| 2015 | | Road to Ponnegansett | Ernest L. Ipsen |
| 2016 | | Portrait of Rev. Channing | Darius Cobb |
| 2017 | | Abstracts (4) | Panos Ghikas |
| 2017 | * | Architectural Rendering | Ludvig S. Ipsen |
| 2018 | | Boatyard, Edam | Jason Berger |
| 2019 | | The Duet | Margaret Pearson |
| 2019 | | Verdant Valley | Stanley W. Woodward |
| 2020 | | Works (6) | Constance Stella |
| 2020 | *** | Sailing Ship (3) | Harold Haven Brown |
| 2021 | | Woe in Yellow | Gale Fulton Ross |
| 2021 | | Nobody Knows What I'm | Gale Fulton Ross |
| 2021 | | Haying in Wartime | Horace Burdick |

NOTE: In addition to the above purchases, the Library also has other paintings, statuary, bronze figures and a number of etchings, lithographs and photographs as gifts. Oil painting unless otherwise noted.

*Watercolor **Wood Carving *** Etchings +Crayon
 ++Mixed Media ##Acrylic
 ###Ceramic Sculpture #Pen and Ink =Oil Stick Painting

